



## SUPPLEMENTARY REGULATIONS

BMU European SuperMoto Championship 2022

Round 1

15.05.2022

Venue: City of DRAMA - GREECE

### 1. ORGANIZERS

A.MOT.O.E.

### 2. CLASSES

SM65

SM85

S3

OPEN

### 3. ACCESS

See attached map

Nearest city: Drama, at 8.0 km. from the circuit,

GPS coordinates of the circuit: 41°10'13.2"N 24°12'09.9"E

### 4. CIRCUIT INFORMATION

Name: 69 Speedway – Kallifitos - Drama

length: 1200m / asphalt: 1070m (89%) offroad: approximately 130m (11%)

width: . / asphalt: 9m offroad: 8m

homologation type: AMOTOE Homologation

### 5. NEAREST HOSPITAL

Name: General Hospital of Drama

Approximate distance from venue: 8.0 Km

### 6. OFFICIALS

BMU Steward: TBA

Race Director: George Prionas

Clerk of the Course: Alexis Prokopiou

Chief Technical Steward: Theophilos Papadopoulos

Administrative control: Elsa Vlachou

Paddock Official: TBA

Timekeeper: AMOTOE TIMING

CMO: INTERSALONICA

Chief Flagmarshal: TBA



## 7. MEETINGS OF THE RACE DIRECTION

Saturday 20:00

Sunday 17:30

Venue: Race Direction Office

## 8. ADMINISTRATIVE AND TECHNICAL CONTROL

Saturday 17:00 – 20:00

Sunday 08:00 – 09:00

## 9. INSURANCE, ENTRIES AND STARTING PERMISSIONS

All riders must be authorized by their national federation (FMN) in order to participate in the event(s) via starting permission plus license confirmation (to be presented at the administrative control).

All entries must be sent minimum 2 days before the beginning of the Administrative control.

All riders will be required to sign additional documents at the Administrative control.

Riders under the age of 18 (minors) must be accompanied by a legal representative (parent or guardian) at the technical and Administrative control.

By signing and stamping the Starting permission for a rider, their FMN declares that the rider in question:

- has a valid insurance for motorcycling sports according to FIM Europe requirements,
- has no bans or prohibitions that prevent them to participate in the event,
- is physically and mentally fit to participate in the event,
- has the sporting skills of the required level in order to participate in the event without endangering him or other participants during the event

The organizers disclaim all responsibility for damage to a motorcycle, its accessories and components arising out of an accident, fire or other cases.

The organizers have contracted a third party insurance according the BMU regulations for the day of the event (Sunday) for the amount of 20 000 euro.

All Starting permissions must be sent to

Email: [secretary@amotoe.gr](mailto:secretary@amotoe.gr) +30 6972920809

All Starting permissions must be sent to

Email: [sabin@frm.ro](mailto:sabin@frm.ro) +40 735 873 574

## 10. ENTRY FEE

50 euro per rider for S3 and OPEN, 30 euro per rider for SM65 and SM85

## 11. FREE PRACTICES, TIME PRACTICES AND RACES

Free practices, Timed Practices and Races will be run according to the timetable enclosed.

In the days before the race you can use the circuit for practice after contacting the circuit owner on the phone +30 6933010525

## 12. RENUNCIATION OF ANY RECOURSE AGAINST SPORTING AUTHORITIES

Riders renounce all rights of appeal against the organizer, his representatives or agents by arbitration or before a tribunal or any other manner not foreseen by the BMU Regulations or the FIM Europe Sporting Code where



applicable, for any damages for which they could be liable in consequence of all acts or omissions on the part of the organizer, his officials, representatives or agents in the application of these regulations or contributed to or arising out of their actions.

### **SPECIFIC AND ADDITIONAL REGULATIONS FOR THE EVENT:**

Place and date: Kavala 03.05.2022

Approved by Organizer: Tsesmeli Maria

Approved by BMU: Sabin Olariu

Enclosed:

Map of the circuit

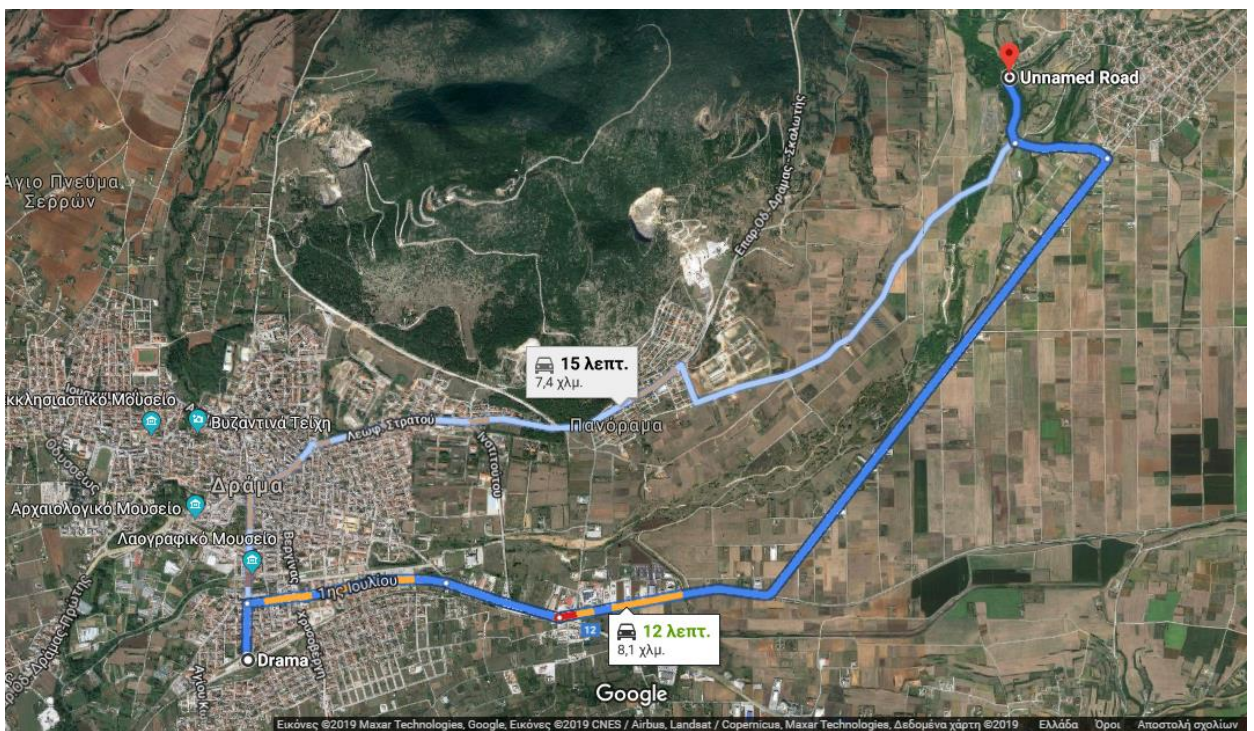
Access Map

Timetable

### **CIRCUIT LAYOUT / CIRCUIT FACILITIES**



ACCESS MAPS



TIMETABLE



BMU EUROPEAN SUPERMOTO CHAMPIONSHIP  
 ROUND 1  
**GRAND PRIX of GREECE 2022**

CIRCUIT , CITY OF DRAMA

15.05.2022

SATURDAY 14.05.2022		
17:00 - 20:00	ALL	ADMINISTRATIVE AND TECHNICAL CONTROL
20:00		ORG AND JURY MEETING
SUNDAY 15.05.2022		
08:00 - 9:00	ALL	ADMINISTRATIVE AND TECHNICAL CONTROL
9:00	ALL	RIDERS BRIEFING
	SM	
09:20 - 09:35	JUNIOR	FREE PRACTICE 1
09:40 - 10:00	S3/OPEN	FREE PRACTICE 1
	SM	
10:30 - 10:45	JUNIOR	FREE PRACTICE 2
10:50 - 11:10	S3/OPEN	FREE PRACTICE 2
	SM	
12:00 - 12:15	JUNIOR	TIME PRACTICE
12:20 - 12:40	S3/OPEN	TIME PRACTICE
	SM	
<b>13:30</b>	JUNIOR	ACCESS FROM PADDOCK TO GRID OPENS
	SM	
13:38	JUNIOR	START OF WARM UP LAP
	SM	
<b>13:40</b>	JUNIOR	<b>RACE 1 (X LAPS = APP. 15 MIN.)</b>
	SM	
<b>14:00</b>	S3/OPEN	ACCESS FROM PADDOCK TO GRID OPENS
14:08	S3/OPEN	START OF WARM UP LAP
<b>14:10</b>	S3/OPEN	<b>RACE 1 (X LAPS = APP. 20 MIN.)</b>
	SM	
<b>15:10</b>	JUNIOR	ACCESS FROM PADDOCK TO GRID OPENS
	SM	
15:18	JUNIOR	START OF WARM UP LAP
	SM	
<b>15:20</b>	JUNIOR	<b>RACE 2 (X LAPS = APP. 15 MIN.)</b>
	SM	
	JUNIOR	PRIZE GIVING CEREMONY
	SM	
<b>15:50</b>	S3/OPEN	ACCESS FROM PADDOCK TO GRID OPENS
15:58	S3/OPEN	START OF WARM UP LAP
<b>16:00</b>	S3/OPEN	<b>RACE 2 (X LAPS = APP. 20 MIN.)</b>
	S3/OPEN	PRIZE GIVING CEREMONY